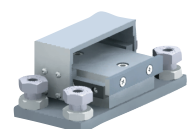
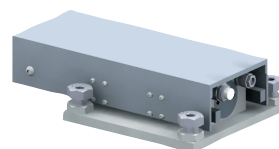
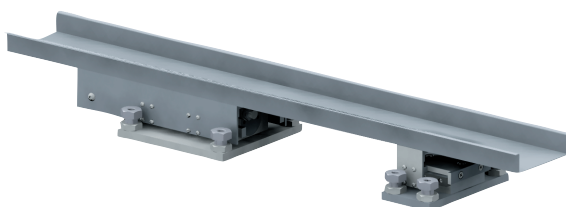


47

Netter Conveyor System Series *LineDrive*



- Gentle and constant conveying
- Flat, compact construction
- Modularly extendable
- Low air consumption
- Very low noise level

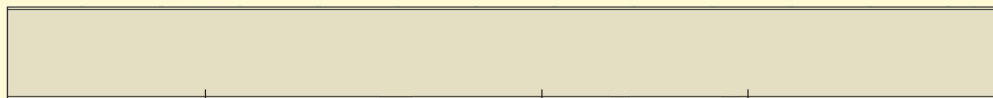




Netter Conveyor System Series *LineDrive*

Type	A [mm]	B [mm]	C [mm]	D [mm]	E [mm]	F [mm]	G [mm]	ØH [mm]	Weight without trough [kg]
NLD 25	250	64	160	165	140	135	10	6	3,5
NLD 25 A	80	64	160	75	50	135	10	6	1,2

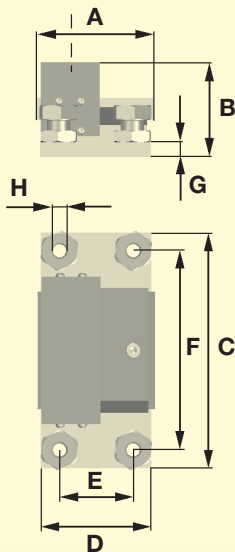
The conveyor system of the *LineDrive* series consist of:



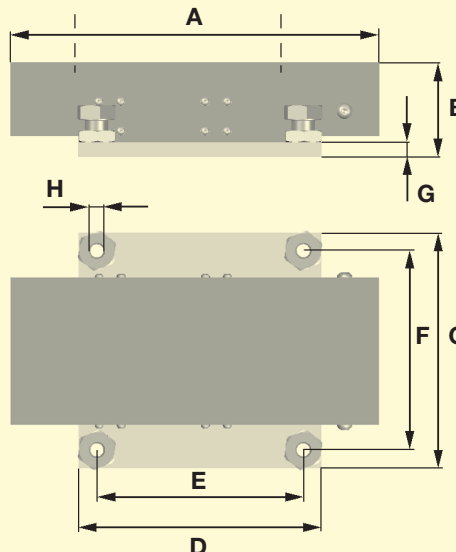
a conveyor trough, manufactured either by the client or as per the client's requirements

LineDrive support NLD 25 A

LineDrive main unit NLD 25



In longer conveyor systems and conveyor with greater loads the trough is supported by the *LineDrive* support.



the *LineDrive* main unit driven by a linear vibrator.

Applications

The *LineDrive* conveyor system is suitable for gentle, horizontal conveying of bulk material. The flat design (height of drive 6.5 cm) allows applications even with confined space constraints.

Design and functioning principle

The *NetterVibration* product programme will be extended by a further conveyor system this year. Traditional vibration conveyor systems work on the throwing principle, in which the product is "thrown" forward, following a trajectory parabola. With the *LineDrive* conveyor principle, the material slides along the conveyor trough. This is made possible by a pneumatic linear drive. The conveyor output can be adjusted to suit the specific characteristics of the material to be conveyed by regulating the compressed air. In longer conveyor systems (from approx. 2m), the trough is supported by the *LineDrive* support. It is possible to convey greater loads by coupling several *LineDrive* propulsion systems.

In addition to the standard versions, customized variants of the *LineDrive* series are also available. Furthermore, all components can be supplied individually.

Permissible operating conditions:

Drive Medium:

Compressed air or nitrogen (filter $\leq 5 \mu\text{m}$), preferably with oil mist

Optimum Operating pressure:

2 bar

Ambient temperature:

5°C to 60°C

NetterVibration offers the accessories required for mounting, installation and control of vibrators and interval impactors.

Netter provides solutions.

Consult our experienced application technicians.

Netter GmbH

Germany

Fritz-Ullmann-Str. 9
55252 Mainz-Kastel
Tel. +49 6134 2901-0
Fax +49 6134 2901-33

United Kingdom

2 Sandpiper Close
Station Road
Hednesford
WS12 4RN
Tel. +44 1543 424990
Fax +44 1543 423196

Switzerland

Erlenweg 4
4310 Rheinfelden
Tel. +41 61 8316200
Fax +41 61 8311291

www.*NetterVibration*.com
info@*NetterVibration*.com